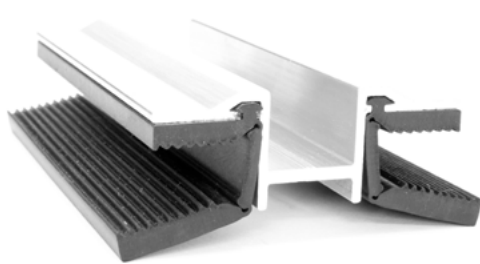




JURCHEN TECHNOLOGY GLASS-GLASS CLIPS

BEST IN CLASS



Breakage rate

down to
0.05%

Thanks to our **form-fit** design, our glass-glass clips achieve an ultra low breakage rate compared to the common third party product with a force-fit. The extra grip of our module clips **minimises installation damages** and ensures that there is no contact with the metal substructure. Our middle protection bar **prevents extreme torsional moments** and controls glass breakage.

Cost saving

up to
50%

Our glass-glass module clips can be installed in just **three steps** with the smallest possible mounting team required. Thanks to our smart design you can expect **up to 50 percent labour saving** and **up to 30 percent time saving**.

Raw material

down to
35%

Our glass-glass clips are **premium-quality** and **eco-sensitive**. Our re-engineered product design allows us to cut down raw material by 35 percent. Its sleek design supports **minimal shading down to zero percent** (depending on the solar plant location).



JURCHEN TECHNOLOGY GLASS-GLASS CLIPS

BEST IN CLASS

**Frameless Glass-Glass
Ground Installation**

↑2.2_{GW}

**Frameless Glass-Glass
Roof Top Installation**

↑57_{MW}

**Glass-Glass Module
Clips Sold**

↑67_M

**DEVELOPED IN COOPERATION WITH EPC BUILDERS
AND PV MODULE MANUFACTURERS**

GLOBALLY INSTALLED IN ALL CLIMATIC CONDITIONS

MULTI-PURPOSE SYSTEM COMPATIBILITY

CERTIFIED BY FIRST SOLAR® AND CALYXO

READY FOR 1,500V DC