

# Product Overview

Substructure, DC Cabling and Mounting Systems for Solar



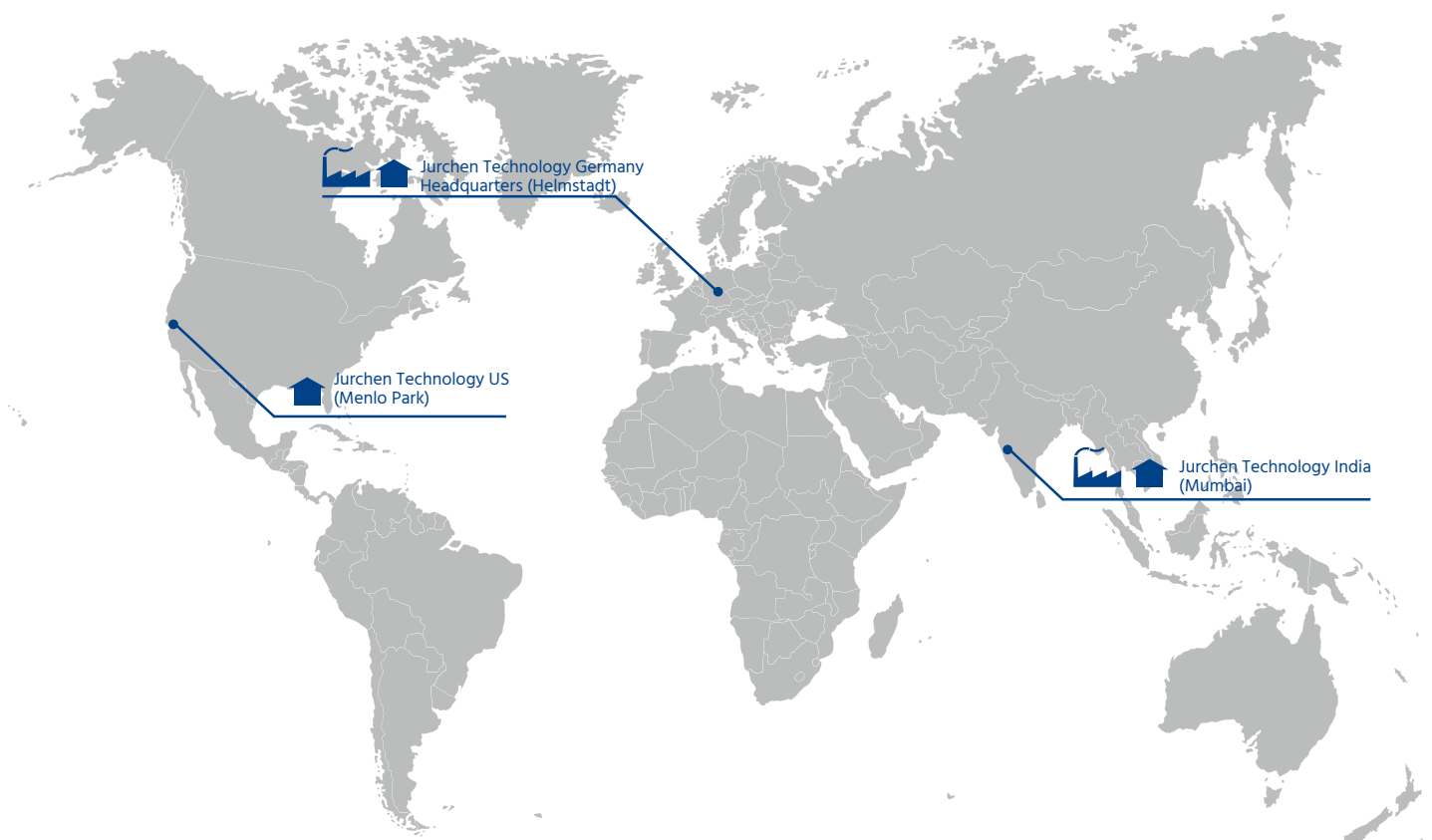
# Best in Class DC Cabling and Revolutionary SOLAR Substructures

Jurchen Technology specializes in the development and production of substructure and high-quality DC cabling for ground mount solar and rooftop systems since 2008.

We offer a dual and innovative component solution for solar plants. Jurchen Technology attaches special importance to the quality of the materials and workmanship and the long-lasting reliability of its products. This allows us to implement an extremely wide range of customer requirements, individually and optimally.

The Jurchen Technology engineering team supports customer projects from the planning and construction to operation.

Jurchen Technology's components are designed in Germany with manufacturing in Germany and Mumbai, India.



# Substructures for Solar Power Plants

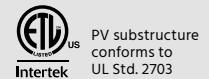
## PEG – high-density solar – The revolution in utility scale PV power



picture: meralli projects

- Lightweight design saves up to 78% on material and logistics costs
- No heavy machines required
- Simple and fast installation reduces labor and machinery costs by more than 50%
- Highly efficient area utilization of 1.85 MWp per hectare (750 kWp per acre)
- Comparatively constant energy production throughout the day due to 8° east-west orientation

Distribution: DE, IN



## smartFLAP – Genius three steps: safe, easy, fast

- smartFLAP is a PV fixed tilt substructure for large photovoltaic modules.
- The system is optimized for FirstSolar Series 6 modules.
- Safe, easy and fast final module positioning
- Less risk of injury and damaging modules
- 3x faster in module mounting as typical structures.
- Only 2 screws per module for fixing



Distribution: DE, IN

**First Solar®**  
Ecosystem Partner

» Keep it **smart & simple**  
is the guiding principle in the  
development of our products «

## UniBase – Single-support system



- Easy assembly without sealing of the surface area (no concreting necessary)
- Inclination: Standard 25°, individual design upon inquiry
- Optimal adaptation to the prevailing terrain conditions, even in uneven terrains
- Universal for all frameless and framed modules system
- Designed for snow-load zone II and wind zone I (other dimensioning upon inquiry)
- Small amount of components which allow for a faster installation

Distribution: DE, IN

## TwinBase – Variable twin base system

- Inclination: Standard 25°, individual design upon inquiry
- Universal application for all frameless and framed modules
- System designed for a wind speed of 150 km/h
- Small amount of components which allow a faster installation
- Scalable use at customer's request



Distribution: DE, IN



# Substructures for Rooftop and Floating Solutions

## Plantec Universal East-West



- Optimized utilization of the given area
- Extreme light aluminium construction
- No perforation of the roof membrane
- Shadow free installation of the modules

Distribution: IN

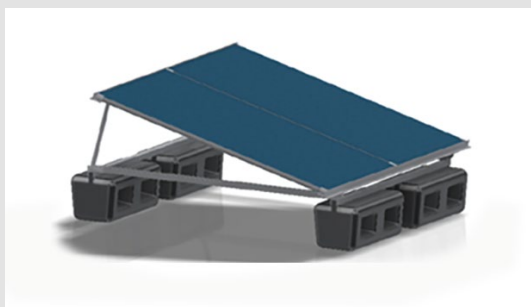
## Plantec Universal South

- Extreme light aluminium construction
- No perforation of the roof membrane
- Fast and easy assembly by the use of less mounting parts
- No need for special tools

Distribution: IN



## Aqua floating PV MMS



- Application of highest-quality materials for a long product life cycle
- Reliable product design with proper float experience
- High and reliable delivery capacity

Distribution: IN

# Products for Industrial Rooftops

## Trapeze bridge systems



- An excellent lightweight Aluminium structure for trapezoidal roof
- Can be used at any directions East west or south
- Easy installation and durable accessories.
- Also available with FULL RAIL which makes the system sturdy and take more loads.

Distribution: DE, IN

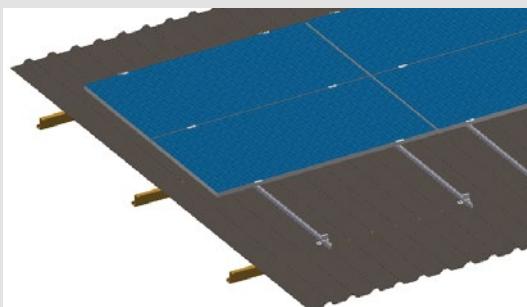
## Slider fixer rail

- Fast erection aluminium system for laying landscape solar modules.
- Available in height of 100 mm for fast dissipation of heated solar modules.
- Excellent for Trapezoidal roof or High Rib roof.

Distribution: IN



## Full rail system

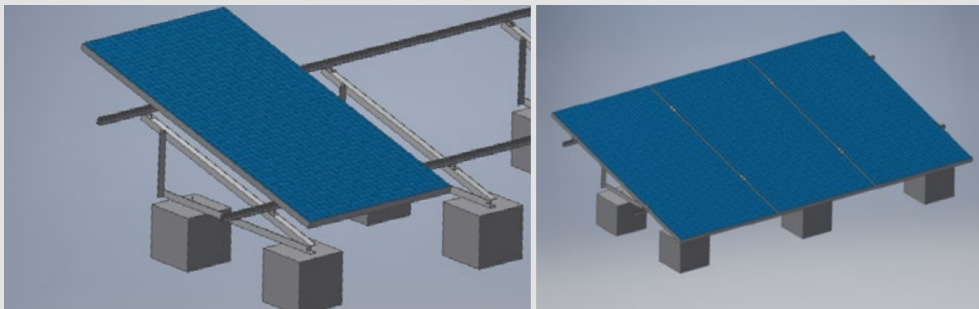


- Full rail is a cost-effective solution when you need faster installation on site.
- The advantage of the system is that the load is transferred directly on the purlins.

Distribution: IN

» Jurchen Technology is the  
**only manufacturer** on the market  
 to offer **substructure** and  
**DC cabling** from one source. «

## 15 degree **south facing** flat roof solutions



- For maximum output from the sun throughout the day

Distribution: IN

## Roof structures for **asbestos** sheets



Distribution: IN

## **Non penetrating** roof solutions

for standing seam



for Kalzip® roof



for KLIP-LOK® / SAFLOK®



Distribution: IN

# DC Cabling Systems

## SK-II and SK-III – Cabling system



- Solar project specific solutions
- 50% reduction of cable,  
50% reduction of installation time
- Smaller PV array junction box possible
- In-line fuses can be integrated directly into the cable (also JuCon)

Distribution: DE, IN

## JuCon – Cabling system

- Unique vulcanisation process uses the same material as for the sheath of the solar cable
- Up to 50% fewer junctions
- Minimum assembling of connectors
- Higher energy yield
- Perfect for Floating Solar

Distribution: DE



up to 1500V



### Headquarters Germany:

Jurchen Technology GmbH  
Prinz-Ludwig-Straße 5  
97264 Helmstadt - Germany

Phone: +49 9369 98229-6600  
E-Mail: [info@jurchen-technology.com](mailto:info@jurchen-technology.com)  
[www.jurchen-technology.com](http://www.jurchen-technology.com)

### Subsidiary India:

Jurchen Technology India Private Limited  
414, The Summit Business Bay (Omkar)  
Andheri – Kurla Rd,  
Opposite to Cinemax, Chakala,  
Andheri East, Mumbai  
Maharashtra – 400093 - India.

Phone +91 22 4968 9797  
E-Mail: [sales@jurchen-technology.com](mailto:sales@jurchen-technology.com)

### Subsidiary USA:

Jurchen Technology US Corporation  
101 Jefferson Drive  
Menlo Park, CA 94025 - USA

Phone +1 209 2475658  
E-Mail: [matthew.lusk@jurchen-technology.com](mailto:matthew.lusk@jurchen-technology.com)